

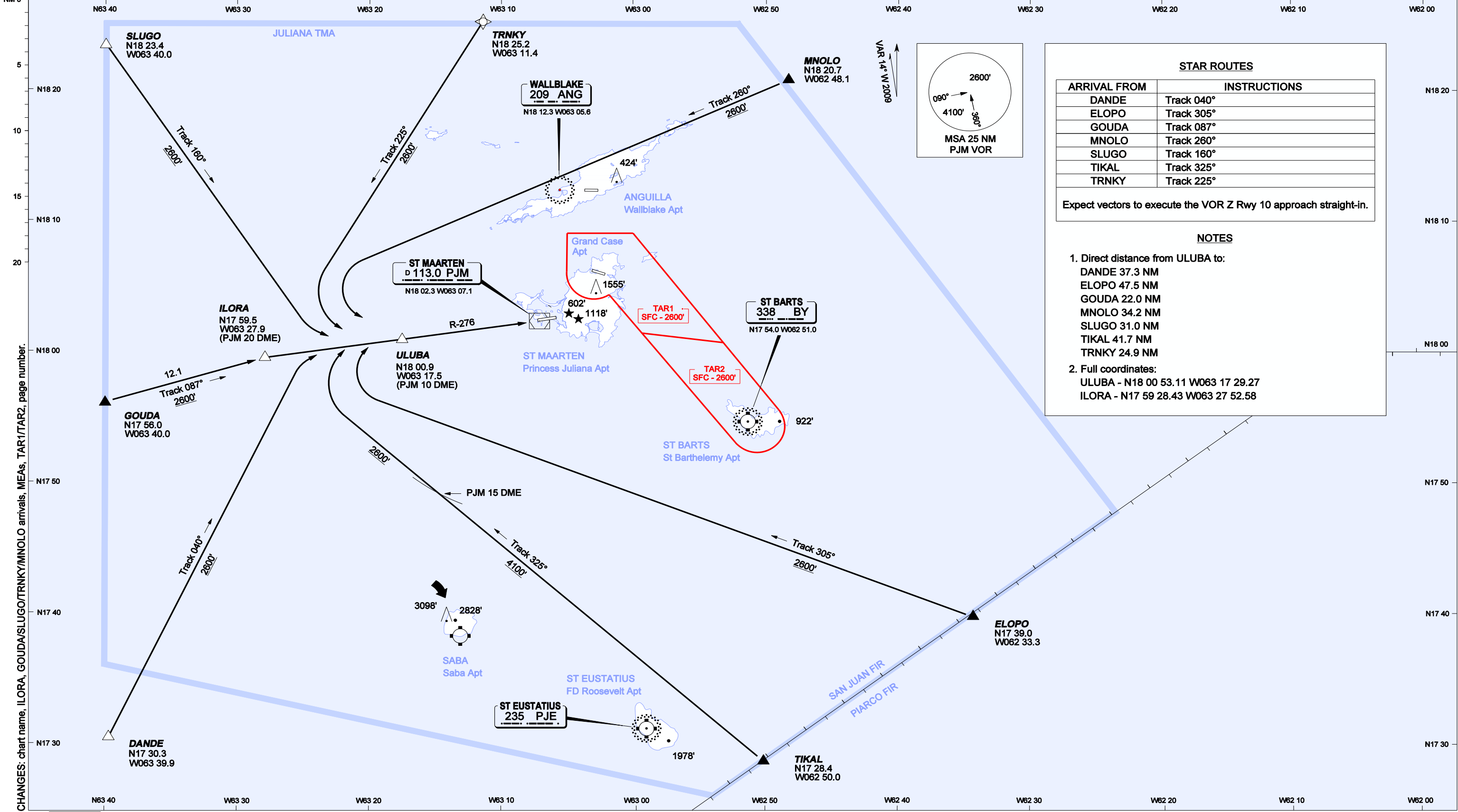
AIP DUTCH CARIBBEAN

STAR - ICAO  
ULUBA ONE ARRIVAL (RADAR REQUIRED)

AERODROME ELEVATION: 14'  
TRANSITION LEVEL: FL65  
TRANSITION ALTITUDE: 5000'

JULIANA APPROACH 128.95 (PRIMARY), 118.7  
JULIANA TOWER 118.7

PRINCESS JULIANA INT'L (TNCM)  
PHILIPSBURG, ST MAARTEN



**STAR ROUTES**

ARRIVAL FROM	INSTRUCTIONS
DANDE	Track 040°
ELOPO	Track 305°
GOUDA	Track 087°
MNOLO	Track 260°
SLUGO	Track 160°
TIKAL	Track 325°
TRNKY	Track 225°

Expect vectors to execute the VOR Z Rwy 10 approach straight-in.

- NOTES**
- Direct distance from ULUBA to:  
 DANDE 37.3 NM  
 ELOPO 47.5 NM  
 GOUDA 22.0 NM  
 MNOLO 34.2 NM  
 SLUGO 31.0 NM  
 TIKAL 41.7 NM  
 TRNKY 24.9 NM
  - Full coordinates:  
 ULUBA - N18 00 53.11 W063 17 29.27  
 ILORA - N17 59 28.43 W063 27 52.58

CHANGES: chart name, ILORA, GOUDA/SLUGO/TRNKY/MNOLO arrivals, MEAs, TAR1/TAR2, page number.